



Maritec Tanker Management Private Limited

Near Miss Details

Ship File No : N/A
Office File No : N/A
Form No : N/A
Issue : N/A
Revision : N/A
Rev Date : N/A

Guidance:

- 01) Please do not mention any names in the near miss report.
- 02) The confidentiality will be maintained by removing the name of the vessel when the report is circulated to the different vessels in the fleet.
- 03) NOTE: ADDITIONAL INFORMATION IF REQUIRED TO BE ADDED IN A SEPARATE SHEET AND ATTACHED TO THIS REPORT.

Vessel : Bitu River

Defect ID : 34

Defect Details

Manual for Navigation and signaling light panel equipment is not matching with onboard existing equipment. Already equipment is defective and GC 079 raised. However, it is quite difficult to operate navigation light, in case light is busted or not working then no any alarm or indication to notify the watch keeper. OOW always check visually by themselves during change of watch and frequently during watch to confirm that navigational light is working.

On the navigational light controller when selecting RAM and NUC light controller is working. Only when selecting navigation and anchor lights this alarm is showing in the light controller/panel (2nd navigational module is not registered.)

At port, the navigational light continue on and need to switch off the main power to keep it off.

Requisition Code :

Categories

Primary :	Near Miss	Vessel Dept :	Deck
Secondary :	Inadequate or Poor Quality Purchasing	Office Dept :	Technical

Applicable Dates

Date Raised : 03-Aug-2023

Date Completed : 23-Nov-2023

Other Details

Priority :	Normal	QMS Elements Ref :	- SELECT -	Verified By :	
Show in Monthly Safety Meeting? :	No	SFI :		Verified On :	
Potential to become a serious accident : Medium			Recurrence : Medium		

Causes

Manual for Navigation and signaling light panel equipment is not matching with onboard existing equipment onboard.

Corrective Action

GC send to the maker / While waiting for the GC response / action, OOW routinely check visually the navigational light during navigation.

Preventive Action

Navigational light controller must be replaced or rectified.

CONTRIBUTING FACTORS

Descriptions

Machinery / Equipment Damage

Root Causes- Job Factor

Excessive Wear and Tear

Substandard Conditions

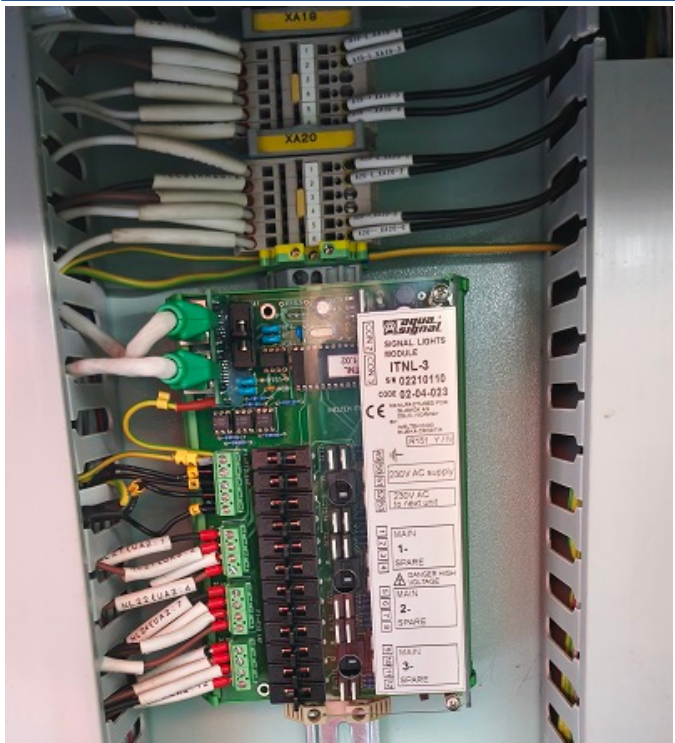
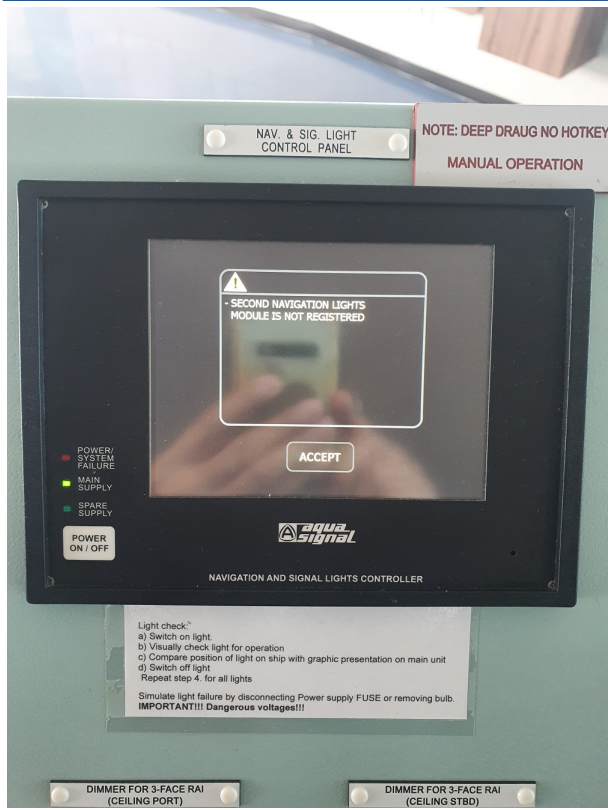
Defective Materials

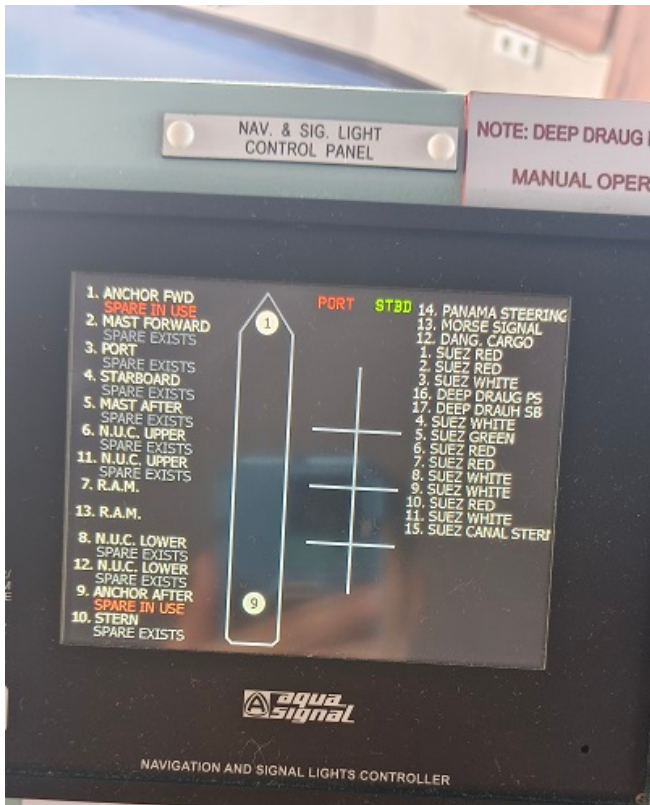
Follow Up

On	By	Follow Up	
24/Nov/2023	Marin Ceapa Staff Code - 10446 - MST	After replacement of INTNL-10 with new ITNL-3 system is working fine.	Link1
06/Oct/2023	Marin Ceapa Staff Code - 10446 - MST	The new spares received and replaced with old display unit. The System was tested and the same repeat fault was observed "SECOND NAVIGATION LIGHTS MODULE IS NOT REGISTERED". The GC079 defects is still existing after replacement of the new spare display unit with an additional new defect coming up by which the Navigation lights cannot be switched ON.	Link1
05/Oct/2023	Nawin Khaware	Please advise the updated status.	


Before & After Pictures

Before	After
--------	-------





Notification

 File Not Uploaded