



Maritec Tanker Management Private Limited

Near Miss Details

Ship File No : N/A
Office File No : N/A
Form No : N/A
Issue : N/A
Revision : N/A
Rev Date : N/A

Guidance:

- 01) Please do not mention any names in the near miss report.
- 02) The confidentiality will be maintained by removing the name of the vessel when the report is circulated to the different vessels in the fleet.
- 03) NOTE: ADDITIONAL INFORMATION IF REQUIRED TO BE ADDED IN A SEPARATE SHEET AND ATTACHED TO THIS REPORT.

Vessel : Bahama Blue

Defect ID : 185

Defect Details

This is to report you that we found rope probably belong to fishing net which was observed floated on starboard side close to front of accommodation.
Crew picked up the loose end of rope and tried to remove it but seems rope secured at bottom side by bottom anodes.
Presently rope secured to deck. Planning to remove it by using work boat in next convenient port. Diameter of rope about 10 mm, loose end length about 5 meters.
The distance from rope end to aft thrusters was about 10 m when loose rope was floating on water surface.

Requisition Code :

Categories

Primary :

Near Miss

Vessel Dept :

Deck

Secondary :

Other

Office Dept :

Operations

Applicable Dates

Date Raised : 28-May-2023

Date Completed : 25-May-2023

Other Details

Priority :

Normal

QMS Elements Ref :

- SELECT -

Verified By :

Nawin Khaware

Show in Monthly Safety Meeting? :

No

SFI :

Verified On :

19/Jun/2023

Potential to become a serious accident : Medium

Recurrence : Low

Causes

Vessel has fishing ropes stuck on the bottom anodes while sailing across coastal water full of fishing nets.

Corrective Action

One loose end of this fishing rope was connected with ship's messenger rope and secured on deck.
At anchorage crew was using work boat pulling loose end of fishing rope with connected messenger into forward of vessel and put on mooring winch.
Fishing rope was finally removed from bottom anode where it was stuck.

Preventive Action

Keep proper look-out to avoid area with fishing nets.
Use search lights for obtaining look-ahead safety area clear of fishing nets.

CONTRIBUTING FACTORS

Root Causes- Management Factors

Problem Identification / Control Issue

Root Causes- Personal Factor

Others

Direct Causes- Unsafe Conditions

Others

Substandard Acts

Other Unsafe Acts

Substandard Conditions

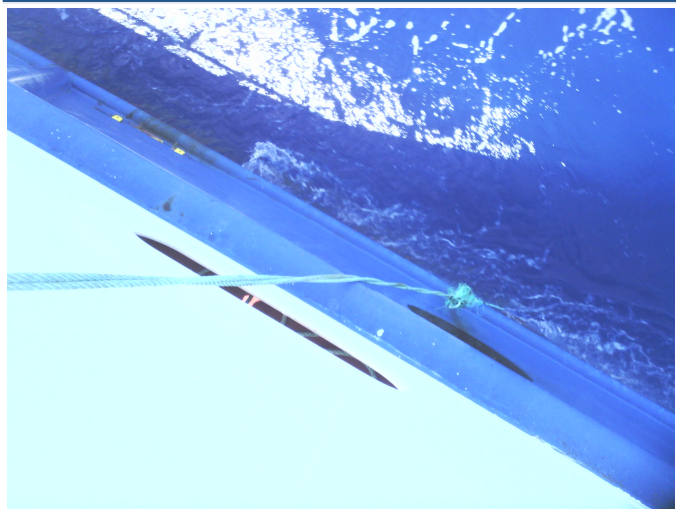
Ship Movement

Follow Up

On	By	Follow Up	
28/May/2023	Valentin MITENKOV Staff Code - 10552 - MST	One loose end of this fishing rope was connected with ship's messenger rope and secured on deck. At anchorage crew was using work boat pulling loose end of fishing rope with connected messenger into forward of vessel and put on mooring winch. Fishing rope was finally removed from bottom anode where it was stuck.	

Before & After Pictures

Before	After
--------	-------



Notification

i File Not Uploaded